



# CONTROL PANEL SMART GENERAL CATALOGUE

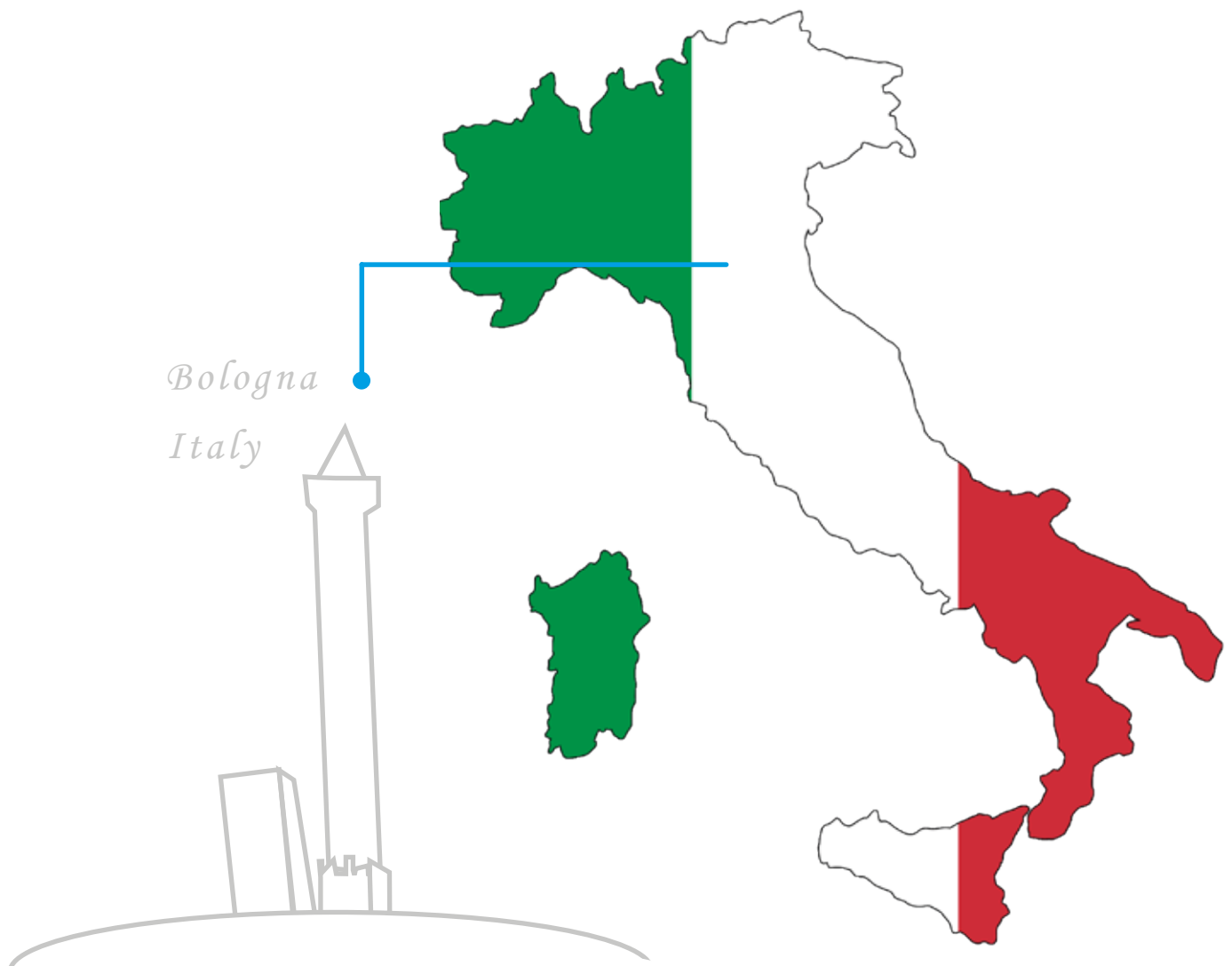


**MADE**  
IN  
**ITALY**

REV .6 PRINTED 07/23

# COMPANY PROFILE

The company is headquartered in Bologna (Italy) and thanks to its professional and well-organized distribution network, it features an effective worldwide presence. SMS is also supplier of several multinational corporations.



Please visit our website to discover the distributor or and dealer nearest to you.

# COMPANY PROFILE

SMS is a leading Italian manufacturer of electronic components for lifts since 1982. After more than 40 years, SMS keeps growing, focusing on state-of-the-art technology and delivering high precision products, while being 100% customer oriented. This enable us to provide highly competitive premium solutions for the lift market.



The company's policy of pursuing quality manufacturing is integrated with a strongly-competitive pricing policy, punctual delivery, and all-round support, both before and after sales, unique in the lift market.

Company's quality standards are certified ISO 9001:2008 and the devices are certified according to EN Standards.





# ELETOUCH

## Control Board - Eletouch

### HIGHLIGHTS

- Modular system up to 32 stops, APB, Down and Full Collective, Multiplex.
- CAN BUS communication with TKL inverter.
- CAN BUS system for serial shaft and car.
- Shaft positioning with existing motor encoder.
- Touchscreen LCD for system configuration and diagnostics.
- Wireless Access Point to manage parameters with mobile phone, tablet or PC.
- Software updating via PC.
- Parameters stored permanently in EEPROM memory.
- Transparent protection plate with I/O labels.

ELETOUCH



ELECB



**PARALLEL CAR CONFIGURATION:  
ELETOUCH BOARD**

CONTROL PANEL BOARDS	ELEXP	MAX STOPS	
		DRIVE PARALLEL ***	SERIAL DRIVE TKL**
HOME LIFT	--	4	5
AUTOMATIC PUSH BUTTON	--	6	8
DOWN COLLECTIVE	--	6	8
	1	12	14
	2	18	20
	3	24	26
	4	30	32
FULL COLLECTIVE	--	4	6
	1	8	10
	2	12	14
	3	16	18
	4	20	22
	5	24	26

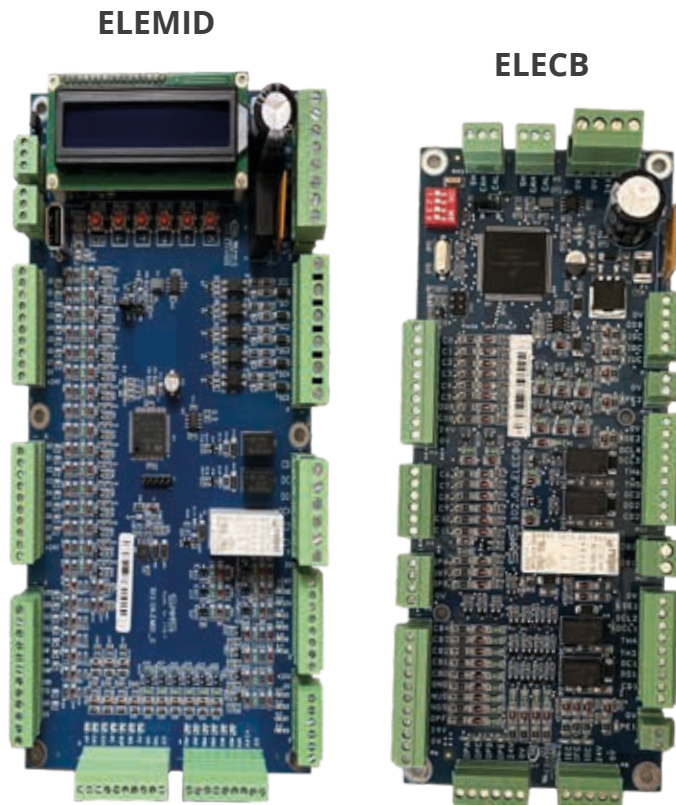
**SERIAL CAR CONFIGURATION:  
ELETOUCH + ELECB BOARDS**

MAX STOPS
8
12
16*
24*
28*
32*
9
12*
15*
21*
27*
32*

## Control Board - Elemid

### HIGHLIGHTS

- Modular system up to 32 Stops, APB, Down and Full Collective Multiplex.
- CAN BUS Communication.
- System configuration and fault diagnostics using 6 buttons and LCD display on board (16 characters on 2 rows).
- Parameters are permanently stored in EEPROM memory, even during black out.
- Updating via PC.
- Parallel and Serial configuration.



### PARALLEL CONFIGURATION: ELEMID

CONTROL PANEL BOARDS	ELEMID	ELEMID +N.1 ELEXP	ELEMID +N.2 ELEXP	ELEMID +N.3 ELEXP	ELEMID +N.4 ELEXP	ELEMID +N.5 ELEXP	ELEMID +N.6 ELEXP
HOME LIFT	8	--	--	--	--	--	--
AUTOMATIC PUSH BUTTON	8	--	--	--	--	--	--
DOWN COLLECTIVE	8	14	20	26	30	32	--
FULL COLLECTIVE	6	10	14	18	22	26	30

### CONFIGURATION WITH SERIAL CONNECTION TO THE CAR: ELEMID + ELECB

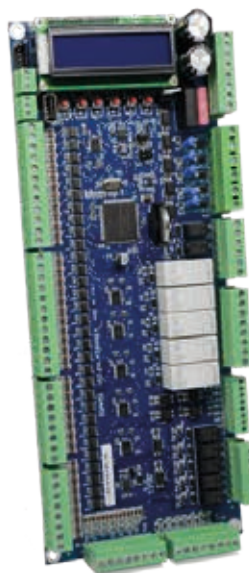
CONTROL PANEL BOARDS	ELEMID	ELEMID	ELEMID + N.1 ELEXP	ELEMID + N.2 ELEXP	ELEMID + N.2 ELEXP	ELEMID + N.3 ELEXP	ELEMID + N.4 ELEXP
CAR BOARDS	ELECB	ELECB +N.1 ELEXP	ELECB +N.1 ELEXP	ELECB +N.1 ELEXP	ELECB +N.2 ELEXP	ELECB +N.2 ELEXP	ELECB +N.2 ELEXP
AUTOMATIC PUSH BUTTON	12	--	--	--	--	--	--
DOWN COLLECTIVE	12	16	24	28	32	--	--
FULL COLLECTIVE	9	12	15	21	--	27	32

## Control Board - Elesys

All boards are entirely engineered and produced in Italy by SMS to guarantee reliability and high quality standard.

Boards are suitable for all traction, Gearless and Hydraulic configuration.

**ELEMPU**



**ELEPLUS**



### HIGHLIGHTS

- Modular system up to 32 Stops, APB, Down and Full Collective Multiplex.
- CAN BUS Communication.
- System configuration and fault diagnostics using 6 buttons and LCD display on board (16 characters on 2 rows).
- Parameters are permanently stored in EEPROM memory, even during black out.
- Updating via PC.
- Parallel and Serial configuration.

### PARALLEL CAR CONFIGURATION

CONTROL PANEL BOARDS	ELEMPU	ELEMPU +N.1 ELEXP	ELEMPU +N.2 ELEXP	ELEMPU +N.3 ELEXP	ELEMPU +N.4 ELEXP	ELEMPU +N.5 ELEXP	ELEMPU +N.6 ELEXP
HOME LIFT	8	--	--	--	--	--	--
AUTOMATIC PUSH BUTTON	12	--	--	--	--	--	--
DOWN COLLECTIVE	12	18	24	30	32	--	--
FULL COLLECTIVE	8	12	16	20	24	28	32

### CONFIGURATION WITH SERIAL CONNECTION

CONTROL PANEL BOARDS	ELEMPU	ELEMPU	ELEMPU + N.1 ELEXP	ELEMPU + N.2 ELEXP	ELEMPU + N.2 ELEXP	ELEMPU + N.4 ELEXP
CAR BOARDS	ELEPLUS	ELEPLUS +N.1 ELEXP	ELEPLUS +N.1 ELEXP	ELEPLUS +N.1 ELEXP	ELEPLUS +N.2 ELEXP	ELEPLUS +N.2 ELEXP
AUTOMATIC PUSH BUTTON	12	--	--	--	--	--
DOWN COLLECTIVE	12	24	--	--	32	--
FULL COLLECTIVE	12	--	18	24	--	32

# ACCESSORY BOARDS

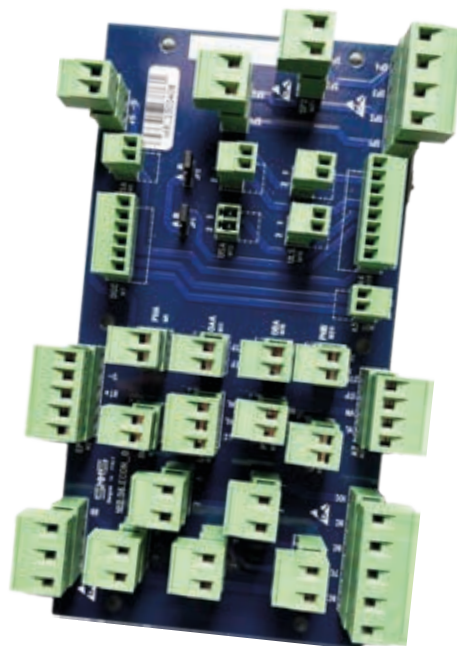
## For Eletouch, Elesys, Elemid

### ELECON BOARD

#### HIGHLIGHTS

- Plug & Play for prewired screw connection.
- Position switches/safety chain contacts.
- Power plugs for socket and car light.
- Intercom.

ELECON

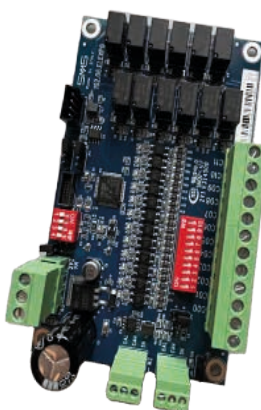


### ELEXP BOARD

#### HIGHLIGHTS

- Serial communication.
- I/O expansion board.
- Negative & positive logic I/O selectable.

ELEXP

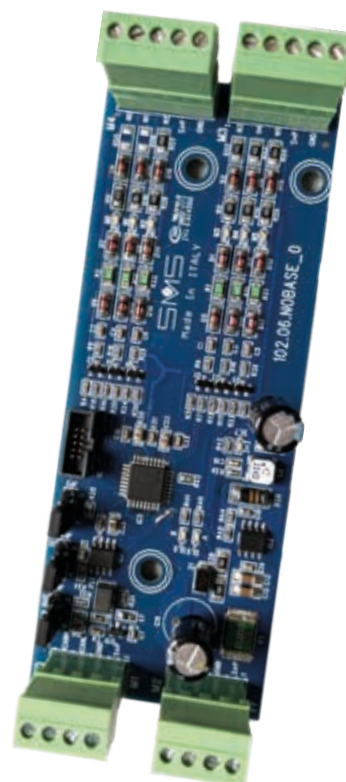


NOBASE

### NOBASE BOARD

#### HIGHLIGHTS

- One board for each floor.
- Easy installation to save time and money.
- Reduced number of cables, 6 wires up to 32 floors.
- Call, display, gong, arrows, priority call, out of service, ....





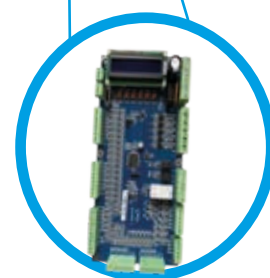
# T-COMPACT VVVF LIGHT

## Open loop Geared Machine

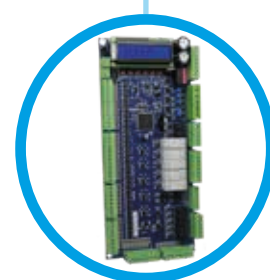
### HIGHLIGHTS

#### Lift application up to 16A (\*) Machine

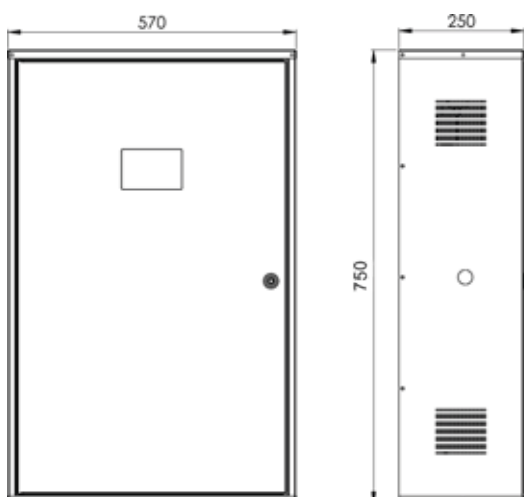
- Up to 32 Stops FULL COLLECTIVE / MULTIPLEX
- System configuration and fault diagnostics using 6 buttons and LCD display.
- Updating via PC.
- Integrated led lighting system.
- Serial and Parallel communication.
- Automatic Door VVVF 230V.
- Single or 2 accesses.
- Compliance with EN STANDARD as follows:  
2014/33/UE - 2014/30/UE - EN 81-20.



ELEMID



OPTION  
ELEMPU



WIDTH (mm)	HEIGHT (mm)	DEPTH (mm)
570	750	250

Speed regulator for  
lift application software by SMS



#### TKV (OPEN LOOP)

- Size up to 16A.
- Open loop asynchronous.
- Removeable keypad.

(\*) Larger size is available on request



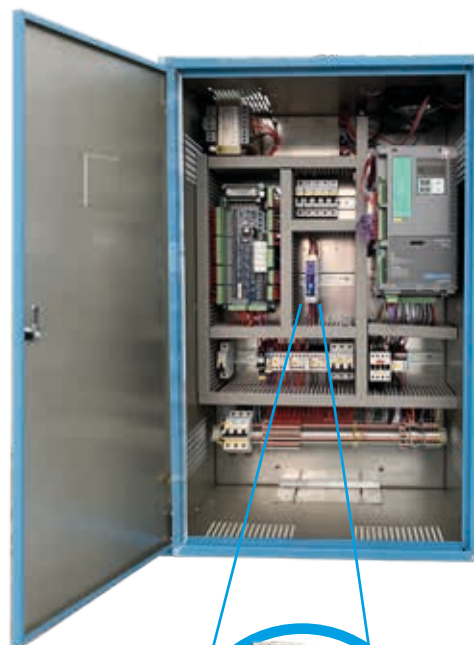
# T-COMPACT VVVF

## Open and closed loop Geared Machine

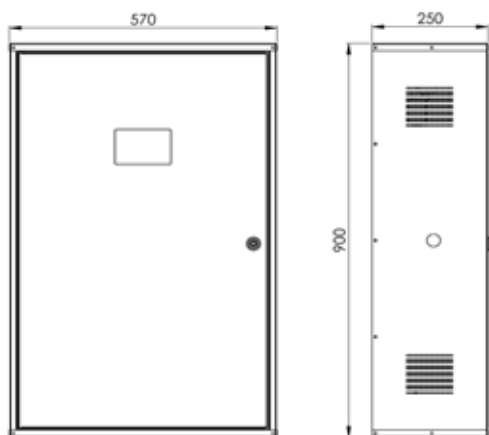
### HIGHLIGHTS

#### Lift application up to 46A (\*) Machine

- Up to 32 Stops FULL COLLECTIVE / MULTIPLEX
- System configuration and fault diagnostics using 6 buttons and LCD display.
- Updating via PC.
- Integrated led lighting system.
- Serial and Parallel communication.
- Automatic Door VVVF 230V.
- Single or 2 accesses.
- Available with 3-phases UPS system designed for Lifts.
- Compliance with EN STANDARD as follows:  
2014/33/UE - 2014/30/UE - EN 81-20.



Optional  
Built-in  
Emergency



WIDTH (mm)	HEIGHT (mm)	DEPTH (mm)
570	900	250

Speed regulator for  
lift application software by SMS



#### TKL (OPEN/CLOSED LOOP)

- Size up to 45A (\*).
- Open and close loop.
- Removeable keypad.



#### TKK (OPEN/CLOSED LOOP)

- Size up to 46A (\*).
- Open and close loop.
- Built-in keypad with LED display.

(\*) Larger size is available on request

# T-SMART LIGHT

## Gearless Machine

### HIGHLIGHTS

#### Lift application up to 45A (\*) Machine

- Up to 32 Stops APB/DOWN/FULL COLLECTIVE, MULTIPLEX.
- System configuration and fault diagnostics using 6 buttons and LCD display.
- Updating via PC.
- Integrated led lighting system.
- Serial and Parallel configuration.
- Automatic Door VVVF 230V.
- Single or 2 accesses.
- Main switch, light switches ( shaft and car) and power socket in the control panel.
- Remote test operations (safety block, buffers, brake, etc.)
- Overspeed governor in the shaft, controlled by key in control panel for test.
- Built in automatic rescue system and electrical emergency operations.
- Integrated manual electrical rescue operation with monitor of car at floor level, for rescue operation.
- Compliance with EN STANDARD as follows:  
2014/33/UE - 2014/30/UE - EN 81-20.



ELEMPU



Gearless Machine

WIDTH (mm)	HEIGHT (mm)	DEPTH (mm)
350	2180/2230	230

(\*) Larger size is available on request

# T-SMART PLUS

## Gearless Machine

### HIGHLIGHTS

#### Lift application up to 45A (\*) Machine

- Modular system up to 32 stops, APB, Down and Full Collective, Multiplex.
- CAN BUS communication with TKL inverter.
- CAN BUS system for serial shaft and car.
- Shaft positioning with existing motor encoder & direct to floor.
- Touchscreen LCD for system configuration and diagnostics.
- Wireless Access Point to manage parameters with mobile phone, tablet or PC.
- Software updating via PC.
- Integrated led lighting system.
- Serial and Parallel configuration.
- Main switch, light switches ( shaft and car) and power socket in the control panel.
- Remote test operations (safety block, buffers, brake, etc.).
- Overspeed governor in the shaft, controlled by key in control panel for test.
- Built in automatic rescue system and electrical emergency operations.
- Integrated manual electrical rescue operation with monitor of car at floor level, for rescue operation.
- Compliance with EN STANDARD as follows:  
2014/33/UE - 2014/30/UE - EN 81-20.
- Prewired kit for car.



T-SMART - CONTROL PANEL



ELETOUCH



ELECB



Gearless Machine

WIDTH (mm)	HEIGHT (mm)	DEPTH (mm)
350	2180 / 2230	230

(\*) Larger size is available on request



# H-COMPACT HYDRAULIC

## For Hydraulic Lift Machine

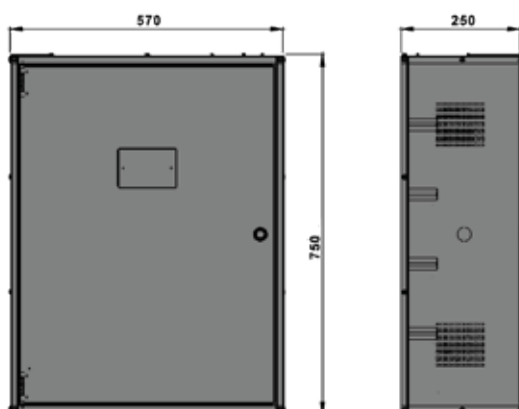
### HIGHLIGHTS

#### Lift application up to 65A (\*) Machine

- Operation system APB/DOWN/FULL COLLECTIVE, MULTIPLEX.
- System configuration and fault diagnostics using 6 buttons and LCD display.
- Updating via PC.
- Integrated led lighting system.
- Serial and Parallel configuration.
- Automatic Door VVVF 230V.
- Single or 2 accesses.
- Available with 3-phases UPS system designed for Lifts.
- Compliance with EN STANDARD as follows: 2014/33/UE - 2014/30/UE - EN 81-20.



ELEMID

OPTION  
ELEMPU

3-phase soft starter

WIDTH (mm)	HEIGHT (mm)	DEPTH (mm)
570	750	250

Hydraulic Speed regulator for  
lift application software by SMS

SMS-Start

- Size up to 70A.
- Connection is direct in line or inside delta.
- Compact size.

Hydrovert



- Size up to 27A.
- Open loop asynchronous.
- Removeable keypad.

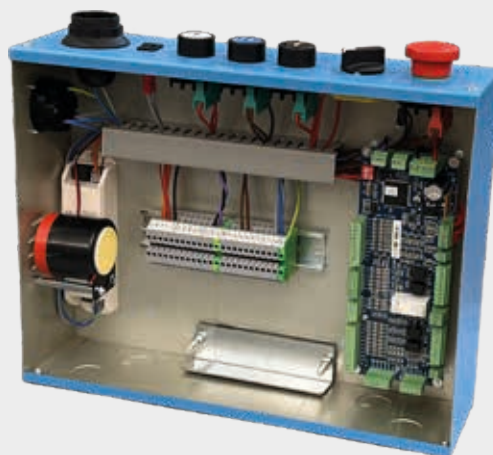
(\*) Larger size is available on request

# MAINTENANCE BOX



## HIGHLIGHTS

- CAN BUS communication.
- All car Input/Output connection.



## HIGHLIGHTS

- Easy connection and fast maintenance.
- Inspection box.
- Connection for light.
- Compact and robust metallic box.

## PRE WIRED



## STANDARD



# VERSA 12

## POWER SUPPLY FOR EMERGENCY OPERATION 12V

LiFePO<sub>4</sub> BATTERIES

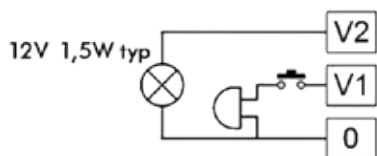


### HIGHLIGHTS

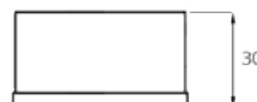
- Output power: up to 10W.
- Emergency duration (V2): > 3h@1,5W.
- Continuous cycle (V1) 1.5W, ideal also for the use of the telephone dialer.
- Small size.
- Lithium/iron batteries (LiFePO<sub>4</sub>).

**VERSA12**, the latest generation emergency power supply, provides same performance as 2500mAh power supply with Nickel-Cadmium batteries but with reduced dimension (LiFePO<sub>4</sub> Battery). In case of emergency, **VERSA12** delivers 3h energy to the cabin light (12V - 1,5W) and the alarm/dialer.

### DIMENSIONS



190-250V 50-60Hz  
50 mA 5W Max  
POWER FACTOR > 0,5



WIDTH (mm)	HEIGHT (mm)	DEPTH (mm)	WEIGHT (kg)
155	30	40	0,15



## LIFT DOOR CURTAIN

COMPLIANCE WITH EN 81-20 EN 81-70



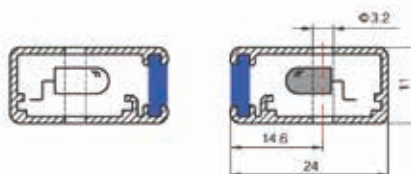
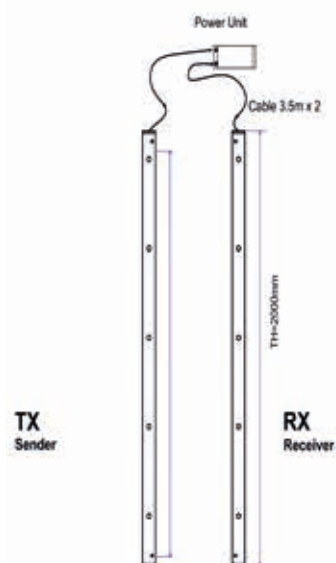
### HIGHLIGHTS

- 94/154/174 Beams.
- High ambient light immunity.
- Detecting range up to 4mt.
- Voice reminder.

**LDC** are light curtains for lifts at 94/154/174 high quality beams with anodized aluminum profile with LED indicator and flow funzioanento up to 4mt. **LDC** 174 beams complies with EN 81-20.

### DIMENSIONS and CONNECTIONS

#### PROFILE A



DEVICE / CODE	WIDTH(mm)	HEIGHT (mm)	DEPTH (mm)	WEIGHT (kg)
LDCA17-LDCA32	24	2000	11	2
(EN 81&20) LDCB36				

## COP AND LOP

## Line Calipso



## HIGHLIGHTS


- EN 81-70 and Braille blue color.
- Push plate, made of 304grade silver brushed; PVD for black or gold.
- Hardchrome plated diecast body (zamak), polycarbonate push plate body (milky white).
- Warranty, 24 months (terms applied).
- 1 Million pressing rate at 20mA@24V non-inductive load.
- Dimension 80 cm, 95 cm.
- Fixing wall mounting, without cutting or patching.
- Optional: double finishes



Polished black



Satin black



Rose Gold



Satin gold



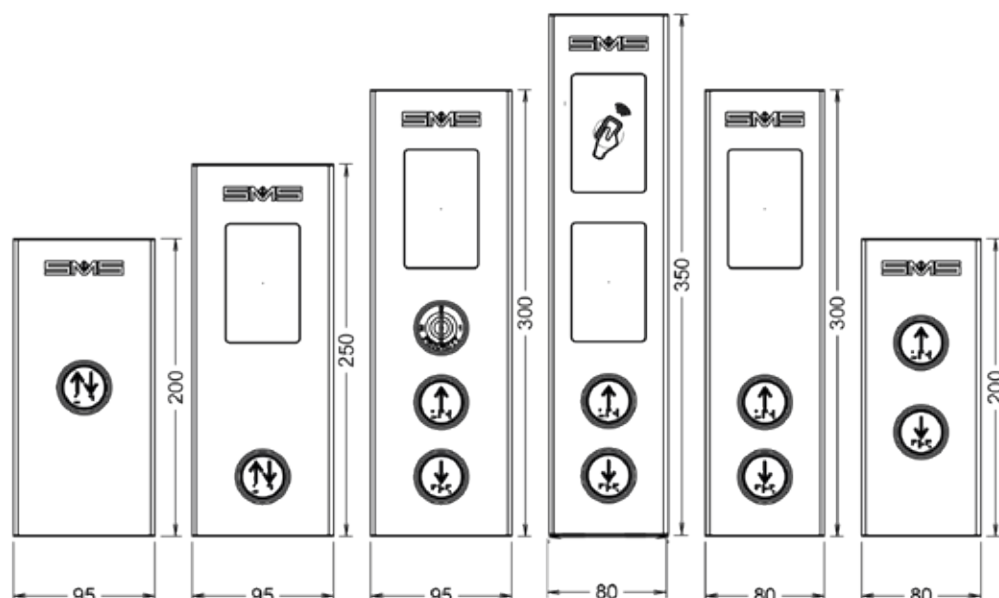
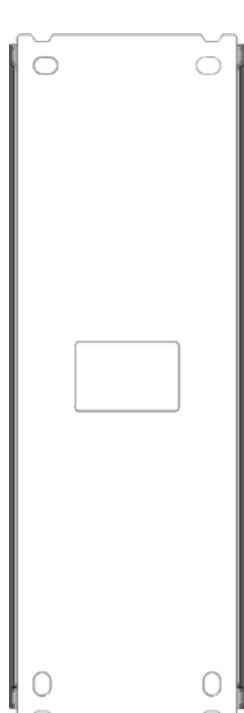
Mirror gold



Scotch brite inox



Mirror inox

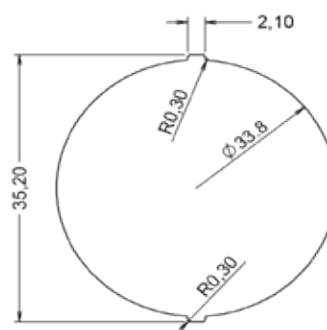
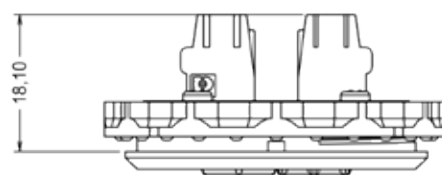
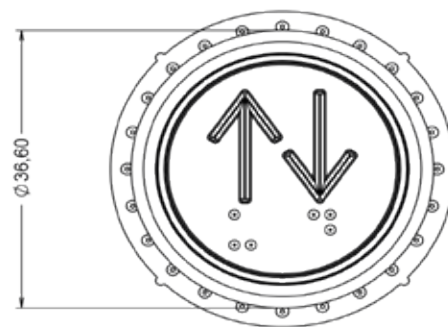
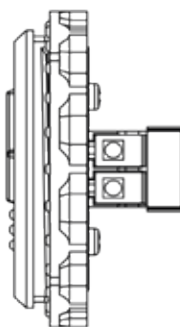


# PUSH BUTTONS

## Line Atlante

### HIGHLIGHTS

- EN 81-70 and Braille blue color.
- Push plate, made of 304grade silver brushed; PVD for black or gold.
- Hardchrome plated diecast body (zamak), polycarbonate push plate body (milky white).
- Braille
- Warranty, 24 months (terms applied).
- 1 Million pressing rate at 20mA@24V non-inductive load.







SMS Srl (Gruppo SASSI HOLDING) Via Guido Rossa, 46,48,50 Loc. Crespellano 40053 Valsamoggia-Bologna-Italy Cap. Soc. 260.000 i.v. R.E.A. 272354 CF-Reg. Imprese Bo 03190050371 P.IVA IT 00601981202 Tel. +39 051 969 037 Fax. +39 051 969 303 Tel. Assistenza tecnica : +39 051 6720710 <http://www.sms-lift.com> e-mail : sms@sms.bo.it

COMPANY \_\_\_\_\_ Tel. \_\_\_\_\_ Email \_\_\_\_\_

DATE \_\_\_\_/\_\_\_\_/\_\_\_\_ REF. LIFT \_\_\_\_\_ ☐ ORDER ☐ OFFER QUANTITY \_\_\_\_\_

## TRACTION CONTROL LIFT

STANDARDS ☐ EN81-1+A1+A2 ☐ A3 (attach.doc.) ☐ EN81-72 ☐ EN81-73 ☐ EN 81-20 ☐ \_\_\_\_\_

CAR CONNECTION ☐ PARALLEL WIRING ☐ \_\_\_\_\_

N° STOPS \_\_\_\_\_ N° DOORS \_\_\_\_\_ MACHINE ROOM: ☐ Bottom ☐ Top

Operating voltage \_\_\_\_\_ Vac \_\_\_\_\_ Hz Load \_\_\_\_\_ kg Speed \_\_\_\_\_ m/s Shaft \_\_\_\_\_ m Minimum floor distance \_\_\_\_\_ m  
Light Voltage \_\_\_\_\_ Vac \_\_\_\_\_ Hz ☐ Emergency car light supply 12V : ☐ 0,7 Ah ☐ 1,2 Ah

MOTOR: \_\_\_\_\_ kW \_\_\_\_\_ Vac \_\_\_\_\_ Hz \_\_\_\_\_ rpm Inom \_\_\_\_\_ A Motor protection: ☐ Thermistor  
DRIVE TYPE: ☐ VVVF Open Loop Brake voltage: ☐ 48 vDC EMERGENCY: ☐ No  
☐ VVVF Closed Loop (Note 1) ☐ 60 Vdc ☐ ARD  
☐ 96 Vdc Provision  
FAN ☐ No ☐ 110 Vdc  
MOTOR: ☐ 230Vac single phase with termocontact ☐ \_\_\_\_\_ Vdc  
☐ \_\_\_\_\_ (attach. doc.)

Note 1: With ENCODER type PUSH PULL 24Vdc 1024 imp/giro, specify if different \_\_\_\_\_

OP.MODE: ☐ A.P.B. ☐ Simplex ☐ Down collective Operating voltage: ☐ 48 Vdc  
☐ Duplex ☐ Full collective ☐ \_\_\_\_\_  
☐ Triplex

DOORS: CAR: ☐ Automatic FLOORS: ☐ Automatic N° DOORS: ☐ 1 Side ☐ A ☐ B  
☐ Manual ☐ Manual ☐ 2 ☐ side 1 or 2  
☐ Without ☐ simultaneous  
☐ selective  
Doors at landing: ☐ Open Door Type: ☐ VVVF (\*)  
☐ Closed ☐ 3ph Voltage: \_\_\_\_\_ V ☐ AC ☐ DC  
☐ Photocell: ☐ 24Vdc ☐ \_\_\_\_\_ V \_\_\_\_\_ Power: \_\_\_\_\_ VA  
☐ Forced door closed ☐ DC (Note 2) ☐ \_\_\_\_\_ (Note 2)  
☐ N° \_\_\_\_\_ Retiring cam \_\_\_\_\_ Vdc \_\_\_\_\_ A \_\_\_\_\_ W ☐ 3ph door \_\_\_\_\_ Vdc \_\_\_\_\_ A \_\_\_\_\_ W

Nota 2: Attach.doc.

SIGNAL CAR: ☐ Position display AT FLOOR: ☐ Occupied DISPLAY TYPE: ☐ Binary code  
☐ 24Vdc ☐ Over load ☐ Position Display ☐ 1 input x floor  
☐ \_\_\_\_\_ ☐ Gong ☐ Direction arrow ☐ 7 segments  
☐ Direction arrow ☐ Gray code  
☐ \_\_\_\_\_ ☐ Car present by locked ☐ Arrow integrated  
☐ Car present by control panel ☐ Overload integrated  
☐ Out of service signals ☐ Gong integrated

SIGNAL COMMON: ☐ Negative  
☐ Positive

OTHER - ☐ Inspection box on the top of Car  
ACCESSORIES ☐ Shaft KIT ☐ Maintenance Box ☐ Shield power cable 8 m.

REFERENCE PEOPLE \_\_\_\_\_ Tel. \_\_\_\_\_ e-mail \_\_\_\_\_

NOTE \_\_\_\_\_  
\_\_\_\_\_  
\_\_\_\_\_





SMS Srl (Gruppo SASSI HOLDING) Via Guido Rossa, 46,48,50 Loc. Crespellano 40053 Valsamoggia-Bologna-  
Italy Cap. Soc. 260.000 i.v. R.E.A. 272354 CF-Reg. Imprese Bo 03190050371 P.IVA IT 00601981202 Tel. +39 051 969 037 Fax. +39  
051 969 303 Tel. Assistenza tecnica : +39 051 6720710 <http://www.sms-lift.com> e-mail : sms@sms.bo.it

COMPANY \_\_\_\_\_ Tel. \_\_\_\_\_ Email \_\_\_\_\_

DATE \_\_\_\_/\_\_\_\_/\_\_\_\_ REFER LIFT \_\_\_\_\_ ☐ ORDER ☐ OFFER QUANTITY \_\_\_\_\_

### HYDRAULIC CONTROL PANEL

STANDARDS ☐ EN81-2+A1+A2 ☐ A3 ☐ EN81-72 ☐ EN81-73 ☐ EN81-20 ☐ \_\_\_\_\_

CAR CONNECTION : ☐ PARALLEL WIRING ☐ \_\_\_\_\_

N° Floors : \_\_\_\_\_ N° Car entrance : \_\_\_\_\_ MACHINE ROOM : ☐ Bottom ☐ Top

Operating Voltage : \_\_\_\_\_ Vac \_\_\_\_\_ Hz Duty Load : \_\_\_\_\_ kg Speed : \_\_\_\_\_ m/s Shaft : \_\_\_\_\_ m Minimum floor distance \_\_\_\_\_ m  
Light Voltage \_\_\_\_\_ Vac ☐ Emergency car light supply 12V : ☐ 0,7 Ah ☐ 1,2 Ah

Hydraulic unit - Motor : \_\_\_\_\_ kW \_\_\_\_\_ Vac \_\_\_\_\_ Hz \_\_\_\_\_ rpm Inom : \_\_\_\_\_ A Motor protection : ☐ Thermistor  
Type : ☐ GMV / 2MC / MORIS Motor connection : ☐ 3 cables (400V) Control : ☐ Soft Starter  
☐ COAM ☐ 6 cables (400/690V) ☐ VVVF Hydrovert  
☐ \_\_\_\_\_ (attach. doc.) ☐ \_\_\_\_\_  
N. Valves : ☐ 2 Valve voltage : ☐ 48 Vdc Emergency: ☐ No  
☐ 3 ☐ 60 Vdc ☐ Go down and doors open  
☐ 4 ☐ \_\_\_\_\_ Vdc  
☐ Motorized or electronics (attach. Technical spec.)

Op.System : ☐ A.P.B. ☐ Simplex ☐ Duplex ☐ Triplex ☐ Down collective ☐ Full collective Operating voltage: ☐ 48 Vdc ☐ \_\_\_\_\_

DOORS : CAR: ☐ Automatic ☐ Manual ☐ Without FLOORS : ☐ Automatic ☐ Manual N° DOORS : ☐ 1 ☐ 2 Side **A B**  
OPENING : ☐ Side 1 or 2 ☐ Simultaneous ☐ Selective  
Door at landing : ☐ Open ☐ Close Door Type : ☐ VVVF ☐ 3 phase ☐ DC (Note 1) ☐ \_\_\_\_\_ (Note 1)  
Voltage : \_\_\_\_\_ V ☐ AC ☐ DC  
Power : \_\_\_\_\_ VA  
☐ Photocell : ☐ 24Vdc ☐ \_\_\_\_\_ V  
☐ Forced door motor  
☐ N° \_\_\_\_\_ Retiring cam \_\_\_\_\_ Vdc \_\_\_\_\_ A \_\_\_\_\_ W ☐ Slowdown \_\_\_\_\_ Vdc \_\_\_\_\_ A \_\_\_\_\_ W

Nota 1: Attach. documentation

Signal CAR : ☐ Position display ☐ Over load ☐ Gong ☐ Direction arrow ☐ Registered ☐ \_\_\_\_\_ AT FLOORS : ☐ Occupied ☐ Position display ☐ Direction arrow ☐ Arrival / Registered ☐ Car present by locked ☐ Car present by control panel ☐ \_\_\_\_\_ DISPLAY TYPE : ☐ Binary code ☐ 1 input per floor ☐ 7 segments ☐ Gray code ☐ Arrow integrated ☐ Overload integrated ☐ Gong integrated  
In the control panel : ☐ Car at floor SIGNAL COMMON : ☐ Negative ☐ Positive

OTHER - ☐ Maintenance box ☐ Inspection box on the top of Car  
ACCESSORIES ☐ Shaft KIT ☐ Shield power cable 8 m.

REFERENCE PEOPLE \_\_\_\_\_ Tel. \_\_\_\_\_ e-mail \_\_\_\_\_

NOTE \_\_\_\_\_

M-HCPI rev.01





SMS S.R.L. (Gruppo SASSI HOLDING)

 **E-mail:** [sms@sms.bo.it](mailto:sms@sms.bo.it) •  **Website:** [www.sms-lift.com](http://www.sms-lift.com) •  **Tel:** +39 051 969037 •  **Address:** Via Guido Rossa 46-48-50  
Loc. Crespellano 40053 Valsamoggia (BO) - Italy

 **E-mail Technical Assistance:** [assistentzatecnica@sms.bo.it](mailto:assistentzatecnica@sms.bo.it) •  **Tel. Technical Assistance:** +39 051 6720710